

## Have you ever wondered what the answers are to the following handicap questions?

### Q: What Do The Letters Designate Following My Scores?

A: The SCORE TYPE indicates specific aspects of a score within a player's scoring record and are designed in the following manner:

- A = Away
- I = Internet
- AI = Away Internet
- P = Penalty
- C = Combined Nines
- T = Tournament
- H = Home
- TI = Tournament Internet

The designated letter(s) shall immediately follow the adjusted gross score if the score type is either a Tournament Score or an Internet posted score. Examples: 98 T, 100 TI, 102 C, 96 H.

### Q: Why is there an asterisk next to some scores?

A: An asterisk indicated these scores were used to calculate your monthly Handicap Index. If your record has 20 scores the best 10 handicap differentials were used and are shown with the asterisk.

### Q: How do I know which nine hole scores were combined as designated by a C on my Handicap record?

A: Combined Nines: Only nine-hole scores posted at your course will be combined. Only away nine-hole scores will be combined with other away nine-hole scores.

### Q: A friend had a GHIN number a couple of years ago and would like to join our golf club. Is her GHIN number still good?

A: If she activates a GHIN number within a two-year period her Handicap history will be available. If she exceeds two years a new GHIN number will be issued to her and she will need to submit scorecards as required by your club. The age of a scorecard is not a problem as long as the round was played on a rated course.

### Q: How long will my T-Scores be held on my record?

A: The number of eligible T-Scores will be counted on a revolving twelve-month basis. Also included will be any T-Scores older than one year that are still part of the players twenty score history. If you only play a few times a month it will take longer to clear the old T-Scores off your twenty-score history.

### Q: I was on vacation and golfed a few times. Do I need to post those scores?

A: YES ... make sure you adjust your gross scores according to the Equitable Stroke Control from all courses with USGA Course Rating and Slope Ratings. You may post on the Internet if your club allows or post the scores as soon as you are back at your golf club.

Lyn Chauvet  
PWGA Handicap/Membership

#### Pacific Women's Golf Association

3101 Sunset Blvd. Suite 1 E  
Rocklin, CA 95677  
Phone: 916 315-8304  
Fax: 916 315-8305  
Email: pacwomensga@usga.org



*Serving Women Golfers in Northern California since 1947*

We're on the web at: [www.golfpwga.org](http://www.golfpwga.org)

Visit our website you can:

1. Access your Handicap Index
2. Post Scores
3. Check Tournament Listings
4. Check Tournament Scores
5. Check Playday Results
6. Read Area News
7. Email any of our board members
8. Post a review of your golf course
9. Look up PWGA member clubs

#### PWGA Executive Board 2005

*President* - Faye Hefte

*Past President* - Mary Jobson

*Vice President* - Pat Keys

*Secretary* - Pat Thomson

*Treasurer* - Sharon Ziegler

*Handicap/Membership* - Lyn Chauvet

*Tournament Director* - Beverly Petterson

*Course Ratings* - Kathy Darden

*Rules* - Luckii Ludwig

*Team Play* - Lois Eriksen

*Public Relations* - Kristina Evans/Jackie Garrett

*Director Nine Hole Clubs* - Sue Eckblom

# PWGA

## NOTES & QUOTES

Pacific Women's Golf Association Newsletter



Fall 2005

## Take the Challenge - Support your High School Girls Golf Team

What an outstanding year we have had so far with our Junior Grants Program. So far in 2005 we have awarded 11 Grants to programs that bring the game of golf to girls. The funds for our program come from an annual contribution from PWGA and a fund raising raffle held at our Spring Partners and Mixed Couples Tournaments. This year we raised \$3700+. Our thanks to the Golf Courses in our area, who contributed rounds of golf for the raffle. Check out our website for a list of donors. [www.golfpwga.org](http://www.golfpwga.org)

What we have noticed as the word of our grants program gets around is that the groups seeking funding are most often our high school girl's golf teams. With the cutbacks in education funding many sports programs are in dire need of financial assistance.

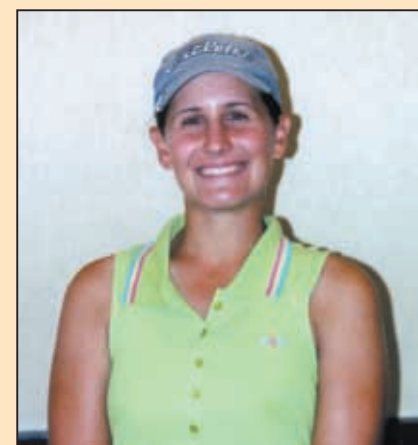
We offer your club this challenge. Find out if your local High School has a girls golf team. If they do, offer the girls on the team a membership in your club. Did you know that PWGA offers FREE handicapping service to these girls until they reach their 18th birthday?

Your club could be a wonderful source of support for the girl's golf team.

Perhaps you could offer them an opportunity to play once a month with your club. Maybe you could support them with donations of balls or equipment from your members. Could you help them financially with funding for uniforms etc.? Could your club members offer some volunteer hours for lessons or rules/etiquette education? Perhaps the girls could use a mentors program with your members. At the very least you can offer them an opportunity to establish a Handicap Index at no cost to your club or to the girls.

If you are interested in working with your high school girls golf team, contact the school make yourself known to the golf coach. See what their needs are at the school and contact me at the PWGA office to see how we can work together to give these girls a great foundation for this wonderful lifetime sport.

**Caroline O'Brien**, Executive Director, PWGA  
916- 315-8305 or 800-995-PWGA



### Danielle Cvitanov

Congratulations to Danielle for her very impressive second place showing in the 2005 California State Women's Amateur. Danielle, currently attending U.C. Davis, has had a very good year so far this year by winning the 2005 Sacramento County Championship and runner up in the 2005 Sacramento City Championship. Good work Danielle, we will be hearing a lot of you in the years to come.

## Letter from the President-



**Faye Hefte**

Everyone told me that this year would go by quickly, but I had no idea that it would be so fast. With Team Play Championship next month and then the Helen Lengfeld tournament in October my duties as President will soon come to an end.

As I reflect on the year, I can't tell you how much I have been impressed by our membership. We have played some very challenging courses this year and without exception I have had good comments about each tournament. Our Senior and Super Senior ladies are the best to have come and completed play at Darkhorse and The Ridge Golf Courses in Auburn. Even if they were unable to complete the tournament (and there were some, me included) the camaraderie was wonderful.

I have had the opportunity to be invited to play in numerous invitational and played in four area playdays. I have met so many wonderful golfers and ladies who have become great friends.

With Team Play Championship just around the corner all of the teams who qualified in their areas are gearing up for the competition. The Reserve at

Spanos Park on the surface looks like it might be a pretty manageable course – however, I think that most people who have played it agree that it is a true test of our golfing abilities. I look forward to going to the tournament and watching this favorite tournament with our members.

October 4th and 5th takes us to Hollister for the annual Helen Lengfeld tournament. This tournament also is our annual membership meeting. If for some reason you are unable to play golf you are invited and encouraged to attend the annual meeting. At this meeting the business of Pacific Women's Golf Association is enacted. The new President, Vice President, Secretary and Treasure are voted into office. The annual budget is approved by the membership. If you would like to attend the business part of the meeting on October 4th or attend the awards luncheon and the installation of officers on October 5th please call Caroline O'Brien and reserve a space. It is my hope that we will have a large turnout for both meetings.

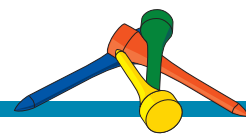
I would like to thank all of you for your support, your ideas and your constructive criticism this year. Without input from our membership the Board of Directors would find it difficult to run the business of our Association. I would encourage all of you to get involved at your club level, your area level or volunteer to serve on the Executive Board. You will be amazed at how rewarding the experience will be.

Happy golfing,  
*Faye Hefte, President*

traveled. Now he plays with the boys and I travel and play with the girls. We do still have our travel time together and we always have our clubs with us.

My work with PW has been memorable and a great learning experience. One of the best parts about volunteering is you have the opportunity to make a difference. The payback is when the "difference" makes others enjoy the game more. After this year I will serve one more year on the Board as the Past President. After that I intend to work on my game and get my handicap down where it was before.

I'm looking forward to the rest of the year and appreciate the opportunity that has been given me to serve as President.



## Tournament Update



**Susie Miller shown with the ball she played when accomplishing a Hole-In-One at the signature "Island Green" hole during the August Couples Tournament at Lake Ridge Golf Club in Reno.**



**Congratulations to Elaine Harris for winning the PWGA championship at Eagle Ridge Golf Club in Gilroy.**

## Rules from Luckii

It all starts at the teeing ground--Rule 11 in the USGA Rules of Golf book. The teeing ground, as defined by the rules, is the starting place for the hole to be played. It is a rectangular area, two club lengths in depth, the front and sides of which are defined by the outside limits of two tee markers.

A ball is outside the teeing ground when all of it lies outside the teeing ground.

When the player's ball is to be teed within the teeing ground, it must be placed on:

- the surface of the teeing ground including an irregularity of surface (whether or not created by the player), or
- a tee placed in or on the surface of the teeing ground, or
- sand or other natural substance placed on the surface of the teeing ground.

A player may stand outside the teeing ground to play a ball within it.

In teeing, if a player uses a non-conforming tee or any other object to raise the ball off the ground, she is disqualified. This means Laura Davies can no longer use a pencil to tee up her ball, but she can rough up the surface and place her ball on the turf. And, John Daly cannot tee up a ball on a beer can.

Before the player makes her first stroke with any ball on the teeing ground of the hole being played,

the tee markers are deemed to be fixed. If she moves them or allows them to be moved for the purpose of avoiding interference with her stance, the area of her intended swing or her line of play, she is penalized two strokes.

If a ball, when not in play, falls off a tee or is knocked off a tee by the player in addressing it, it may be re-teeed without penalty. However, if a stroke is made at the ball in these circumstances, whether the ball is moving or not, the stroke counts but there is no penalty.

In stroke play, if the player, when starting a hole, plays a ball from outside the teeing ground or plays from the wrong teeing ground, she incurs a penalty of two strokes and must then play a ball from within the teeing ground.

If she plays a stroke from the next teeing ground without first correcting her mistake or, in the case of the last hole of the round, leaves the putting green without first declaring her intention to correct her mistake, she is disqualified.

The stroke from outside the teeing ground and any subsequent strokes made by her on the hole prior to her correction of the mistake do not count in her score.

If you have any questions or want to learn more about the rules, check the PWGA web page under publications and click rules for our rule of the week section.

